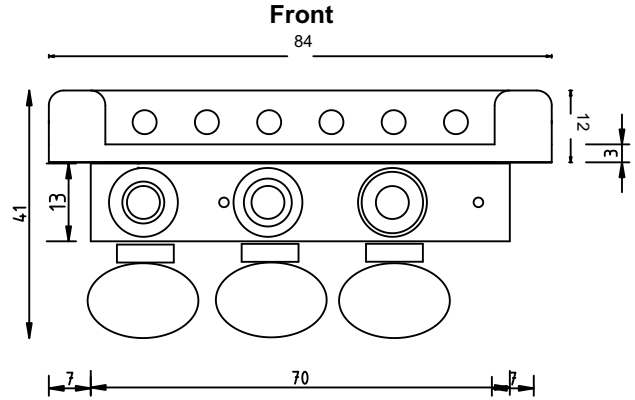
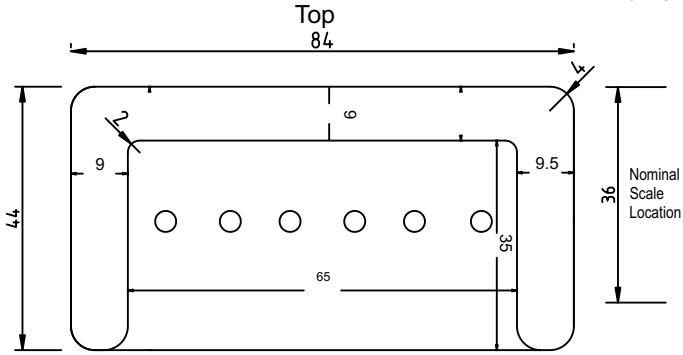


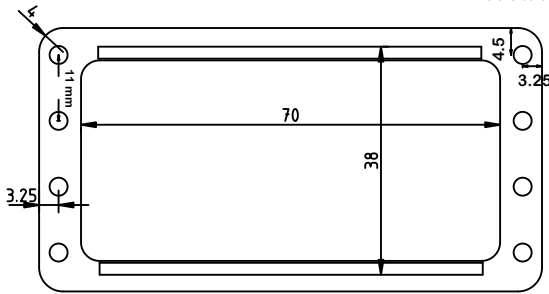
Peachtree Bridge Compact Dimensional Layout

All dimensions in mm



Bottom

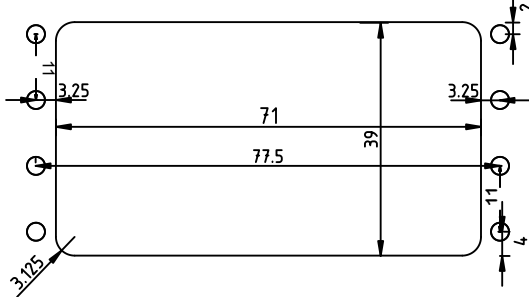
8 x M3x0.5 Mounting Screws
4 Each Side
Hole Clearance = 3.5mm



Peachtree Bridge Compact Installation Cavities

Passthrough Cutout Dimensions

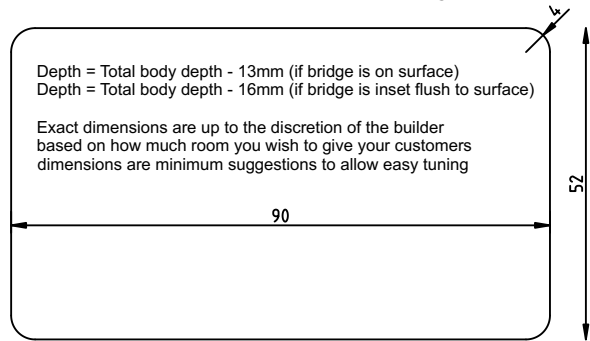
8 Mounting Through Holes
4 Each Side
Hole Clearance = 3.5mm



Rear Tuner Access Cavity

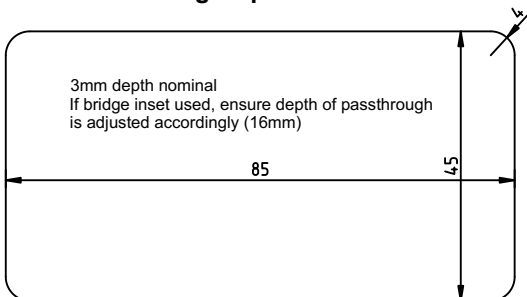
Depth = Total body depth - 13mm (if bridge is on surface)
Depth = Total body depth - 16mm (if bridge is inset flush to surface)

Exact dimensions are up to the discretion of the builder based on how much room you wish to give your customers dimensions are minimum suggestions to allow easy tuning



Bridge Optional Inset

3mm depth nominal
If bridge inset used, ensure depth of passthrough is adjusted accordingly (16mm)



All Specifications Subject to Change Without Notice

The Peachtree Bridge® is supplied under license
Covered under US Patent 11,074,893

Copyright © 2023 Peachtree Bridge Enterprises, LLC.

All rights reserved